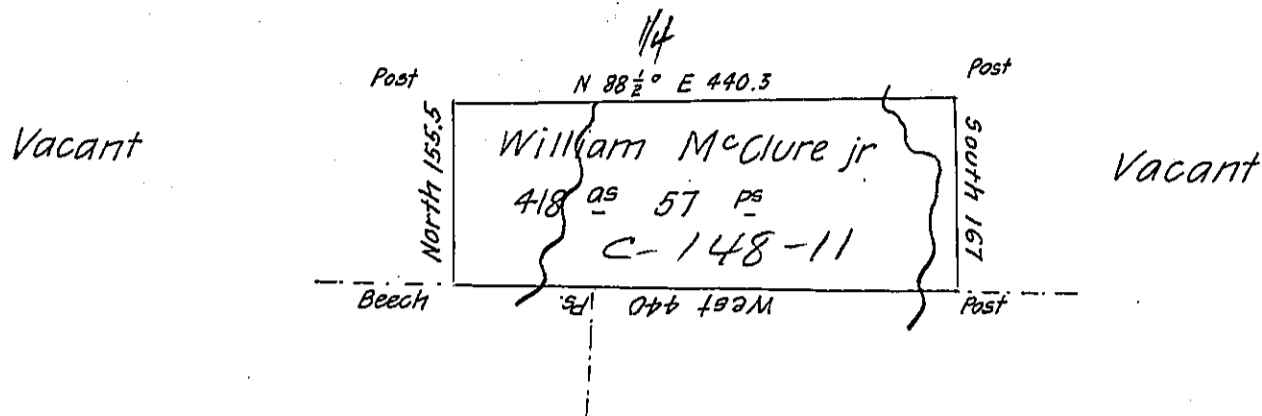


Near the District Line



Mary McClure

William McClure

Situate on the west side of French Creek in Allegheny
 County containing 418 Acres 57 Perches and allowance of Six P. Cent
 for Roads &c. Surveyed the 1st day of March 1800 In pursuance of a
 Warrant granted William McClure Junior dated the 4th day of Jan-
 uary 1794

John Power D. Sr.

To Daniel Brodhead Esquire

Surveyor General

IN TESTIMONY that the above is a copy of the original remaining on file in
 the Department of Internal Affairs of Pennsylvania, made
 conformably to an Act of Assembly approved the 16th day of
 February, 1833, I have hereunto set my Hand and caused
 the Seal of said Department to be affixed at Harrisburg,
 this fourth day of March 1906

Harriet B. Brown
 Secretary of Internal Affairs.